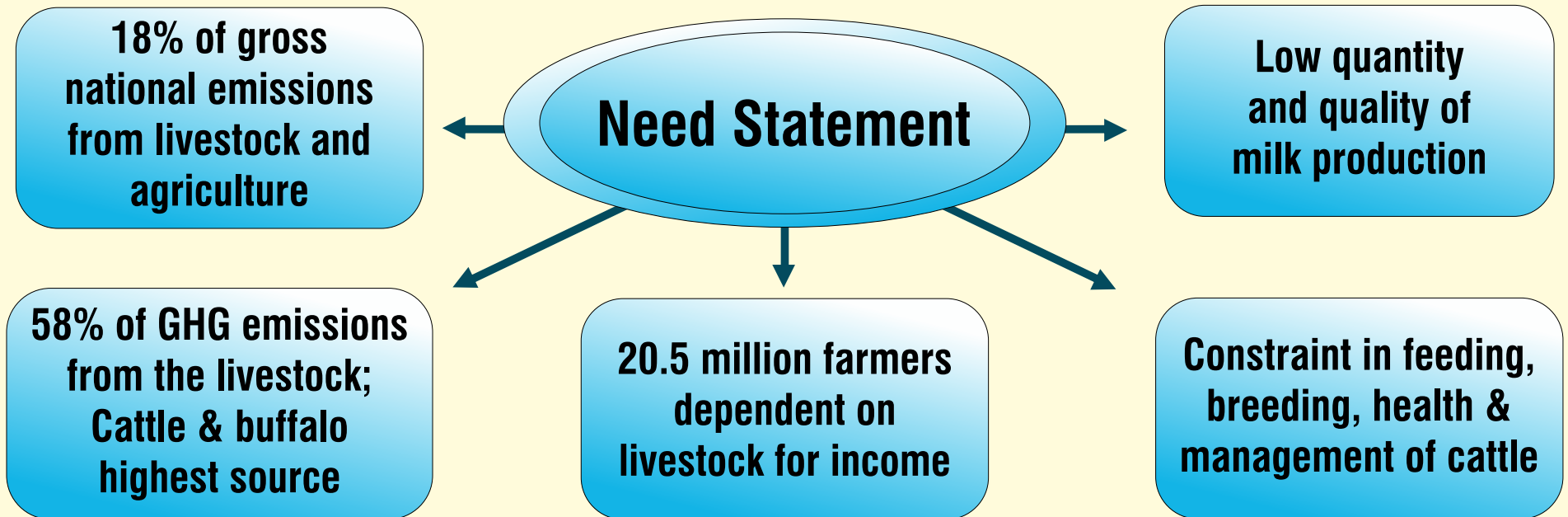


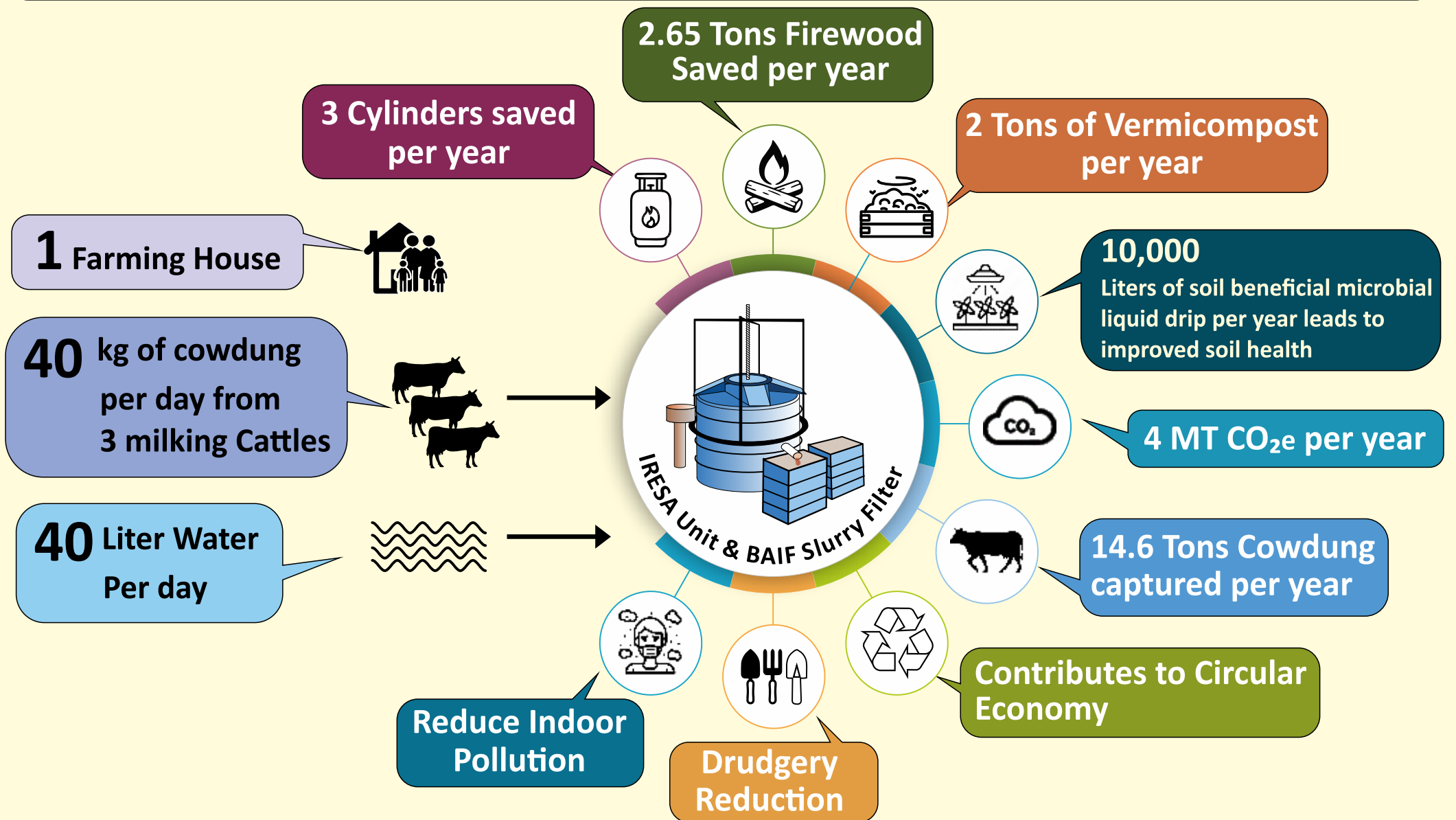
# Dung Management by Adopting Integrated Renewable Energy and Sustainable Agriculture (IRESA)

## Dung management

- Proper manure utilization through Biogas Digesters
- Bio PROM (Phosphate Rich Organic Manure) production
- Vermicomposting
- Adopting proper composting methods



## IRESA – An Integrated renewable energy and sustainable Agriculture system (per unit)



### Impacted SDGs

