

## The Return on Engagement



Corporate employee engagement will build a strong foundation for bridging the gap between rural and urban India. This unique opportunity offers experiential learning in pristine, serene, and environmentally-rich locations. This is an opportunity for the volunteers to understand the intricacies of environmental conservation and sustainable rural development.

## Our Nation-wide Campus Network

### Rajasthan

1. Desert Research Centre  
Undakha, Barmer

### Uttarakhand

1. BAIF Research Station  
Manar, Champawat

### Uttar Pradesh

1. Artificial Insemination  
Training Centre, Rajapur,  
Ranigani, Pratapgarh

### Karnataka

1. Gramodaya Training,  
Demonstration and Research  
Centre, Lakkihalli, Tumkur

### Maharashtra

1. Central Research Station  
Uruli Kanchan, Pune
2. Wagholi Campus  
Manjari (K), Pune
3. BAIF Training Centre  
Peint, Nashik
4. Amrai Campus  
Jawhar, Palghar

### Gujarat

1. Krishi Vigyan Kendra  
Chaswad, Bharuch
2. Jambodi Farm  
Nanodara, Ahmedabad
3. Kalyan Krishi Gau Vigyan Bharti  
Kadod, Surat
4. Vrindavan Campus  
Lachhakadi, Navsari
5. Kaprada Campus, Valsad



## Lasting Impact and Learnings

All the activities are led by our experts having vast technical and ground knowledge. Our team communicates the significance and outcomes of the efforts by the volunteers.

Participants will gain a deeper understanding of the tools and methodologies used in livestock management, sustainable agriculture, and climate change adaptation and mitigation. This knowledge prepares volunteers to recommend appropriate technologies for rural development projects through their organisation's CSR initiatives. The volunteering engagement fosters their personal growth, fulfilment and enables them to function as brand ambassadors of rural India.



**BAIF DEVELOPMENT RESEARCH FOUNDATION**  
Committed to Sustainable Rural Livelihoods and Climate Action

# Plan Your Volunteer Retreat

## Cultivate a Culture of Service

We invite Your Organisation to volunteer for Grassroots Development through Hands-On Work in Sustainable Rural Development and Ecological Restoration.

Contact Us for Volunteering Opportunities with BAIF. Please mention your preference of activity, location, and convenient duration of engagement.

# VALUE BEYOND THE BOTTOM LINE

Elevating Purpose through Volunteering with BAIF

**BAIF Bhavan**  
Dr. Manibhai Desai Nagar, Warje  
Pune, Maharashtra 411058

+91-20-25231661-7

volunteering@baif.org.in  
baif@baif.org.in

Know Our Journey



<https://baif.org.in>



## Campus and Village-based Volunteering Activities

Focus your engagement in exploring sustainability solutions for rural development at our campus locations. Volunteers and their families will experience a fulfilling day while working for environment, nature and communities.

### 1. Hands-On Agricultural Practices

- Participate in crop care and nursery management.
- Learn skills for grafting and aftercare of vegetable and fruit plants.
- Assist in seed grading, treatments, sowing, seed ball preparation, silage/hay making

### 2. Conservation and Land Management

- Join efforts in the desiltation of ponds, bunds, and tanks.
- Engage in digging of trenches or preparation of contour bunds.
- Help prepare azolla bed or vermicompost bed.

### 3. Community and Campus Upliftment

- Contribute to village and satellite campus cleanliness.
- Assist with the beautification of community spaces.
- Participate in wall painting initiatives.

## The Campus Philosophy

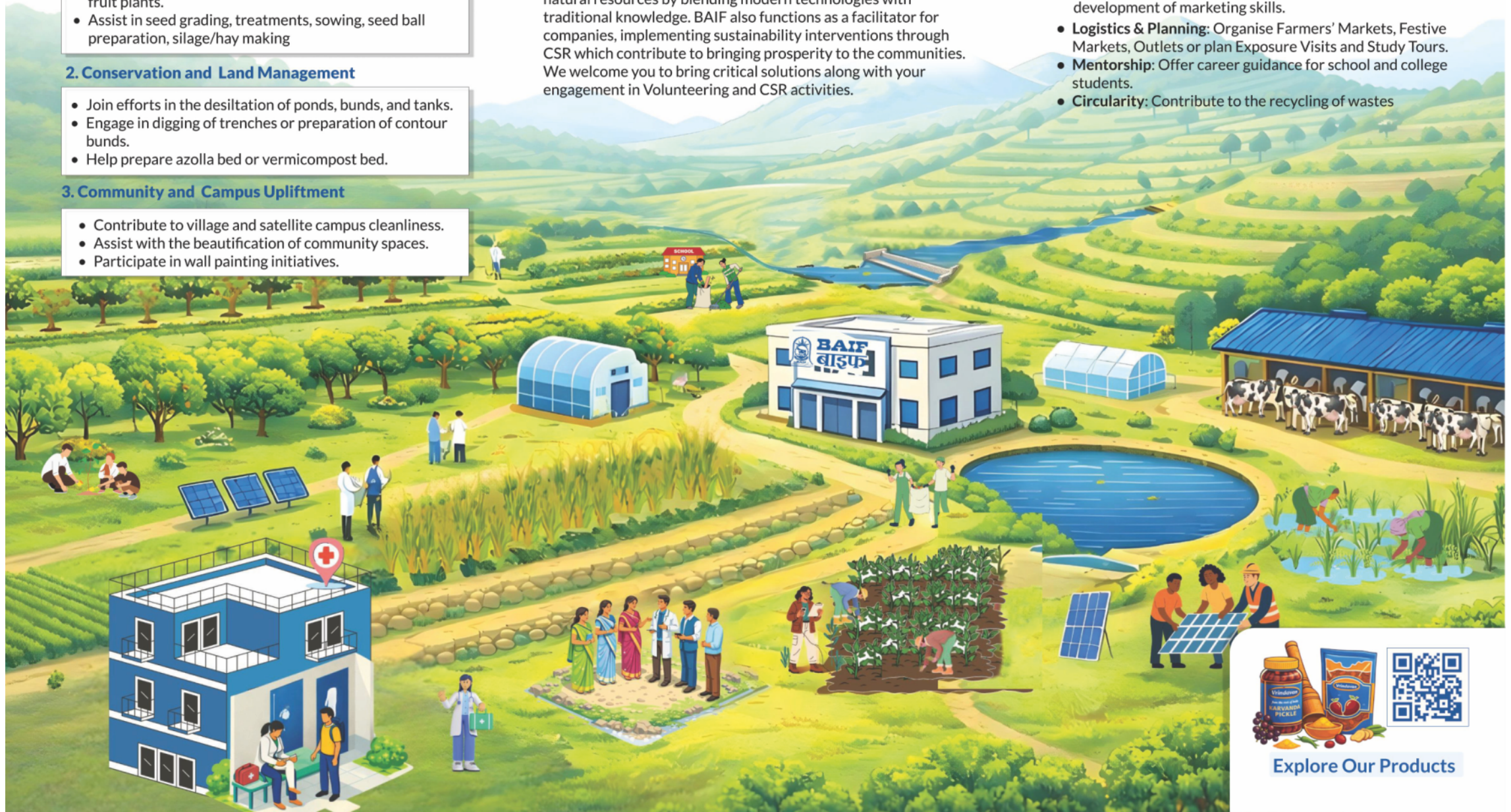
We recognise that the true prosperity of India resides in its villages. Our campus network spans states such as Maharashtra, Gujarat, Karnataka, Uttar Pradesh, Rajasthan, and Uttarakhand. They are managed by scientific and technical teams and serve as vibrant knowledge hubs for climate-resilient agriculture. Our Central Research Station campuses at Uruli Kanchan and Wagholi (Pune) showcase cutting-edge agricultural programmes. BAIF assists rural communities in making optimum use of their natural resources by blending modern technologies with traditional knowledge. BAIF also functions as a facilitator for companies, implementing sustainability interventions through CSR which contribute to bringing prosperity to the communities. We welcome you to bring critical solutions along with your engagement in Volunteering and CSR activities.

## Pro Bono Contribution

Utilise your professional expertise to support development, often without requiring physical presence on a campus:



- **Digital Skills:** Provide training in cybersecurity and digital literacy.
- **Marketing & Business:** Spread the word about BAIF's products on social media. Assist with the development of marketing skills.
- **Logistics & Planning:** Organise Farmers' Markets, Festive Markets, Outlets or plan Exposure Visits and Study Tours.
- **Mentorship:** Offer career guidance for school and college students.
- **Circularity:** Contribute to the recycling of wastes



Explore Our Products